

TOOL QUOTE

INTERACTIVE QUOTING FOR TOOLMAKERS

- ✓ **ToolQuote** is an Interactive mold quoting software tool that automates and organizes quoting for mold makers
- ✓ **ToolQuote** has a user friendly and powerful graphic interface that quickly creates a visualization of mold layouts
- ✓ **ToolQuote** also has a user definable database that interacts with the graphic interface to quickly calculate costs

TOOL QUOTE
INTERACTIVE QUOTING FOR TOOLMAKERS

JDLTech.ca
JDL Technical Services

Key Features of ToolQuote

Simple to Setup & Use

Instant Mold Layout Creation

Automate & Organize Your Quotes

Automatic Calculation of Steel Sizes and Costs

Print & Email Quotes Directly from ToolQuote

Add Actual Costs for Future Comparison

Filter and Compare Past Quotes

Add Photos to Tool Layout

User Definable Database

The step-by-step quote process with **ToolQuote**: Step 1 – Create new quote

The screenshot shows the ToolQuote application window. The menu bar includes 'New quote' (circled in red), 'Copy quote', 'Delete quote', 'Print report', 'E-mail report', 'Compare tools', 'Settings', 'English', and 'Help'. Below the menu bar, there are filters for 'Show:' (Include archive), 'Quote/request:', 'Date from:' (07/05/2016), 'To:' (07/06/2016), 'Client:', 'Not sent', and 'Follow up'. The main area contains a table of quotes with columns for Quote, RFQ #, Client, Description, Received, Send by, Status, Follow up, and Comments.

Quote	RFQ #	Client	Description	Received	Send by	Status	Follow up	Comments
TR2016/013	12324	In House	FM sample	24/03/2016	31/03/2016	Sent	31/03/2...	right side
TR2016/012		ABC Company	Updated version	24/03/2016	31/03/2016	Received		updated version trials
TR2016/010		ABC Company		22/03/2016	29/03/2016	Received		Mud plate
TR2016/008		ABC Company	training	21/03/2016	28/03/2016	Sent	28/04/2...	training session
TAC2015/039	110	In House	single cav trial	02/10/2015	09/10/2015	Received		
AMQ2014/034	CUST2	ABC Company	Mud & Multiplate	20/10/2014	27/10/2014	Received		Mud & Multiplate examples
AMQ2014/033	CUST1	ABC Company	NEW PROGRAM	20/10/2014	27/10/2014	Completed	27/10/2...	
2016/020		DEF Company	demo	07/06/2016	14/06/2016	Received		PT Trial
2016/019		New Client		07/06/2016	14/06/2016	Received		PM Trial
2016/018		ABC Company		10/05/2016	17/05/2016	Received		Comments for report if any
2016/017		ABC Company	Demo trial & error	10/05/2016	17/05/2016	Sent		Demo Trial & Error copy
2016/016		ABC Company	2 cav	19/04/2016	26/04/2016	Completed	25/05/2...	2 cavity demo
2016/015		DEF Company	2 cav	12/04/2016	19/04/2016	Received		Another 2 cavity demo
2016/014		In House	sample quote 2 cav	12/04/2016	15/04/2016	Received	12/05/2...	2 cav sample quote for demo
2016/007	1234	ABC Company	training	21/03/2016	28/03/2016	Received		Training quote
2016/006		ABC Company		21/03/2016	28/03/2016	Received		
2016/005		DEF Company	sample	07/03/2016	14/03/2016	Sent	28/04/2...	Sample quote
2016/004	Test add plates	ABC Company	testing of new feature - additional plates	02/02/2016	09/02/2016	Received		testing of new feature - additional plates
2016/003	1234	ABC Company	2 cav trial quote	02/02/2016	09/02/2016	Received		2 cav trial quote
2016/002		In House	testing plates	28/01/2016	04/02/2016	Sent	14/04/2...	testing plates
2016/001		In House	2 cav manifold, housing, etc	20/01/2016	21/01/2016	Completed		Smallest recommended tool sizing for this part. See other quote for larger recom...
2015/041	AC 5000	ABC Company	12 & 4 cav caps and closures molds	03/12/2015	10/12/2015	Ordered		4 Cav option
2015/040		ABC Company	PG Trial	02/11/2015	09/11/2015	Completed		PG Trial
2015/038		In House	single cav example	25/09/2015	02/10/2015	Completed		single cav example

Record count: 84

Click on 'New Quote'

Note: Shown is overview of previous quotes with status, follow-up dates and comments. Double clicking on any line will open that quote for review.

ToolQuote

Print calculation | Send by e-mail | Copy part | Change rate | Calculate costs | Delete part | External quote | Close

Status: Received

Quote #: DEMO2017/031 | RFQ #: | Client: DEF Company | Description: [Sample Tool for Demo Purposes] | Received: 10/ 2/2017 | Send by: 10/ 9/2017 | Files: Name | Changed | Size

Calculation finished: 10/ 2/2017 | Quote sent: 10/ 2/2017 | Ordered: 10/ 2/2017 | Archive: | Follow up: 10/ 9/2017

Drawing #: 102217 | Description: Tool for Demo purposes - 2 cav | Tool profile: 1 P20 Mold MED | Part type: | Complexity: | Entities: 0 | Sliders: 0 | Mat. holder: ExEt P20M (\$1.75) | Mat. inserts: H13 Commercial

Part	#	Pcs	Material	X	Y	Z	Weight/pc	Weight (lb)	Price/lb	Mat. costs	Hours/pc	Hours	Hourly rate	Price
CONSOLE	0	0	ExEt P20M (\$1.75)	0.00	0.00	0.00	0.0	0.0	1.75	0.00	8	0	70.00	0.00
EJECTOR BACK PLATE	0	0	4140 Holder Block (\$1.50)	0.00	0.00	0.00	0.0	0.0	1.50	0.00	6	0	70.00	0.00
EJECTOR BOX	0	0	4140 Holder Block (\$1.50)	0.00	0.00	0.00	0.0	0.0	1.50	0.00	8	0	70.00	0.00
EJECTOR PLATE	0	0	4140 Holder Block (\$1.50)	0.00	0.00	0.00	0.0	0.0	1.50	0.00	6	0	70.00	0.00
EXTRA EJECTOR PLATE	0	0	4140 Holder Block (\$1.50)	0.00	0.00	0.00	0.0	0.0	1.50	0.00	8	0	70.00	0.00
SUPPORT	0	0	MILD STEEL	0.00	0.00	0.00	0.0	0.0	1.20	0.00	8	0	70.00	0.00
THIRD PLATE FIXED SIDE	0	0	4140 Holder Block (\$1.50)	0.00	0.00	0.00	0.0	0.0	1.50	0.00	12	0	70.00	0.00
THIRD PLATE MOVING SIDE	0	0	4140 Holder Block (\$1.50)	0.00	0.00	0.00	0.0	0.0	1.50	0.00	12	0	70.00	0.00
BECU inserts	2	2	Copper Thermal Mold 172HH (\$16.00)	4.00	4.00	4.00	20.5	41.0	16.00	656.00	16	32	70.00	2,240.00
LIFTERS - DOGHOUSE LG	6	6	ExEt P20M-High Hard (\$1.85)	3.00	3.00	3.00	7.7	46.2	1.85	85.44	24	144	60.00	8,640.00
ELECTRODES	4	4	POCO 2	12.00	12.00	0.25	2.4	9.6	9.38	90.04	15	60	70.00	4,200.00
**				0.00	0.00	0.00	0.0	0.0	0.00	0.00	0	0	70.00	0.00
							96.8			831.48		236		15,080.00

Labour Hrs / Machine Hrs:

Labour / Machine	Comments	Hours	Hourly rate	Price
CAD DESIGN		200	75.00	15,000.00
CAM PROGRAMMING		250	75.00	18,750.00
CNC #1		50	75.00	3,750.00
CNC #2		60	70.00	4,200.00
BORING MILL		35	70.00	2,450.00
CMM MEASUREMENT REPORT		30	70.00	2,100.00
CNC MACHINING		360	70.00	25,200.00
DRILLING		30	70.00	2,100.00
EDM		120	70.00	8,400.00
EXTERNAL PROTOTYPING / ASSEMBLY		100	70.00	7,000.00

Purchased Items:

Description	Supplier	Comments	Pcs/units	Price/Unit	Price
HYDRAULIC CYLINDER	PARKER		1	750.00	750.00
HEAT TREATING			0	1.75	0.00
HOT RUNNER MANIFOLD (20K)			0	20,000.00	0.00
Identification Plaques			1	150.00	150.00
Laser Engraving (at \$250 / cavity)			2	250.00	500.00
Pressure Transducers	RAG		2	900.00	1,800.00
Standard Components (ejection, guides, screws, etc)	DMS		1	3,000.00	3,000.00
STRESS RELIEF			0	0.10	0.00
SUB CONTRACT			0	0.00	0.00
Transport - \$750			1	750.00	750.00

Summary

Price: 831.48 | Profit: 10.00% | USD: 914.63 | Other Currency: 1,143.29 | Exch. rate: 1.25

Labour: 128,880.00 | 0.00% | 128,880.00 | 161,100.00

Purchased: 6,950.00 | 10.00% | 7,645.00 | 9,556.25

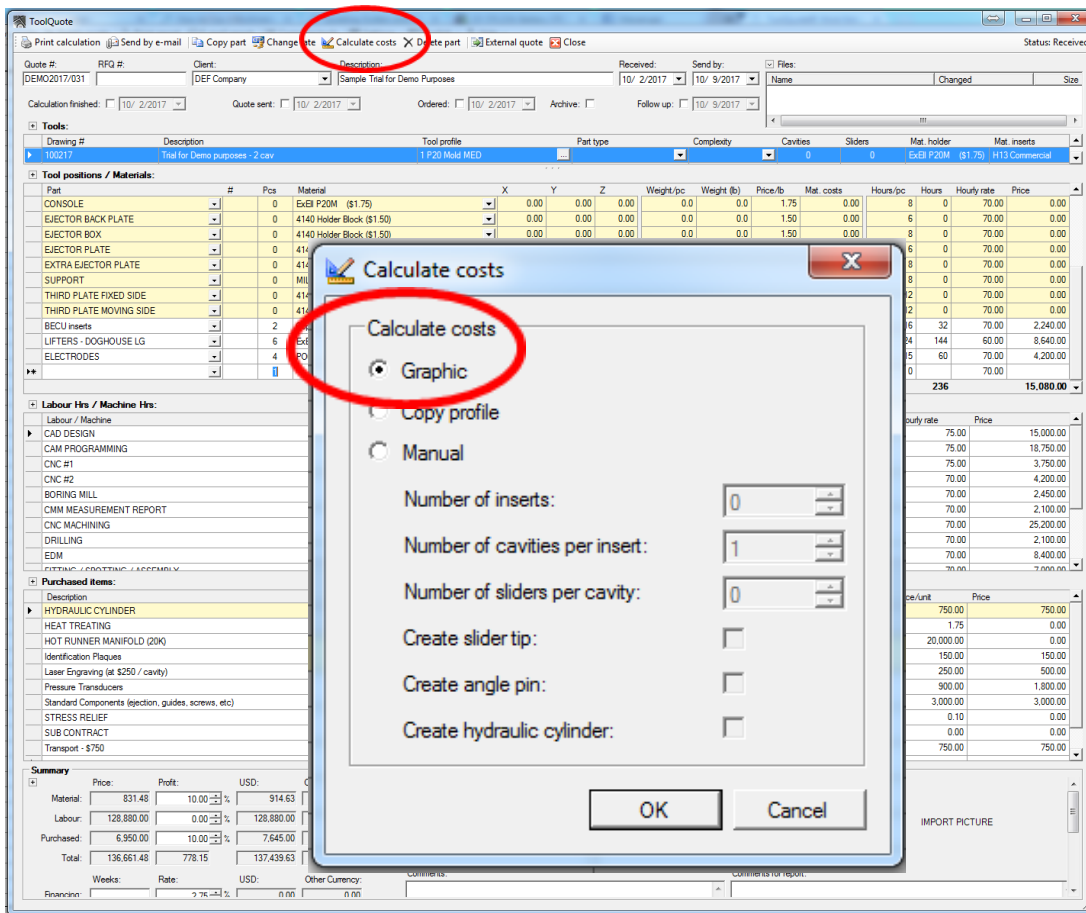
Total: 136,661.48 | 778.15 | 137,439.63 | 171,799.54

Price ordered: 0.00 | Dimensions: X | Y | Z | Sliders: 0 | Hrs: 1826 | IMPORT PICTURE

% for stress relief / heat: 0.00% | Material for stress relief: 0.0 | Weeks: | Comments for report:

Weeks: | Rate: | USD: | Other Currency: | Comments:

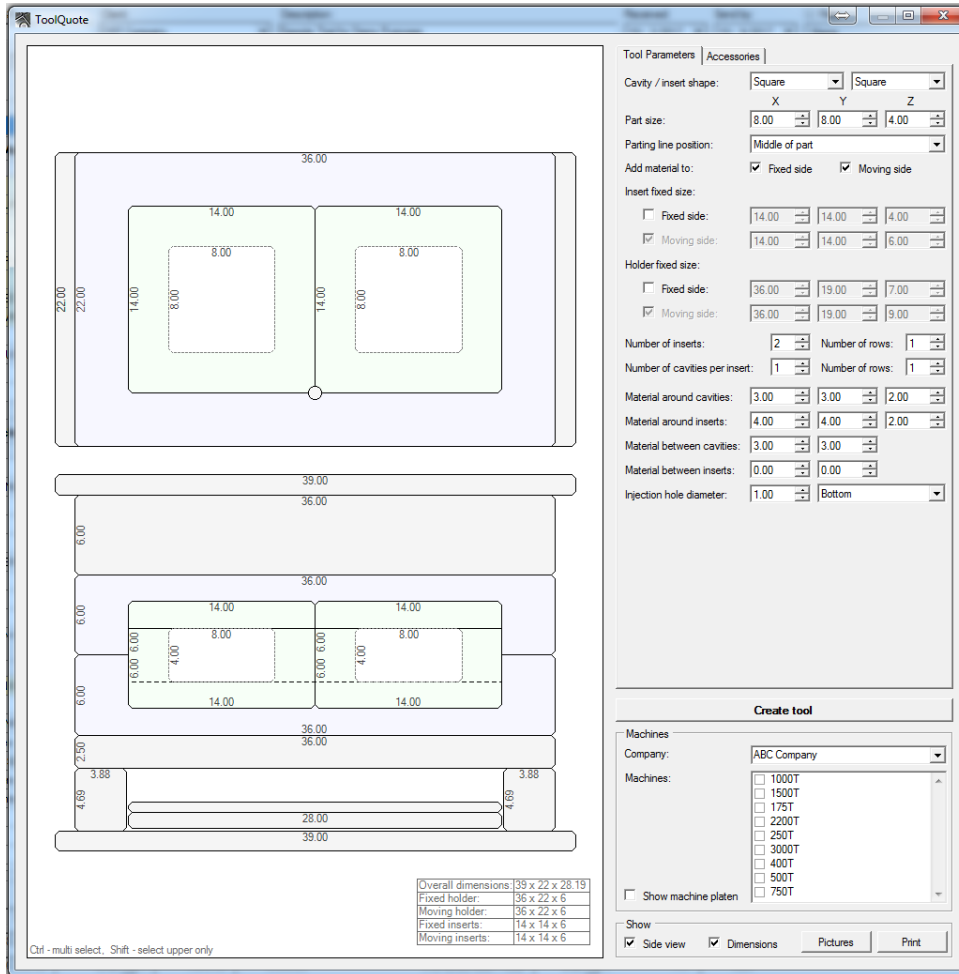
Step 2 - Enter basic quote and part data, select a tool profile, part type and tool complexity. You may also enter rec'd date, a quote send by date, follow-up date and some comments.



Step 3 - You have the option to 'picture' your mold build or it can be done manually for small jobs or sub contract work.

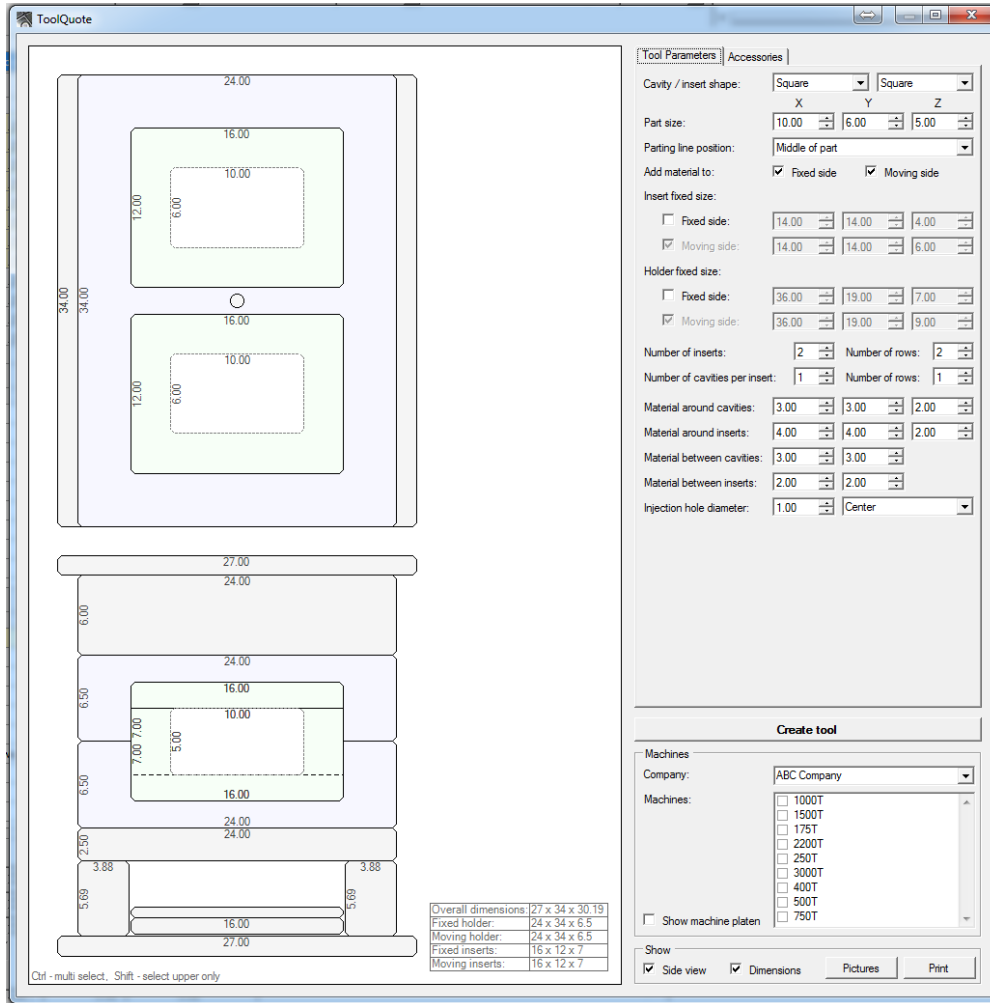
Copy Profile is new – used for selecting profiles that were generated directly from a previous quote.

Select 'Calculate Costs' and then 'Graphic' to get your calculation.



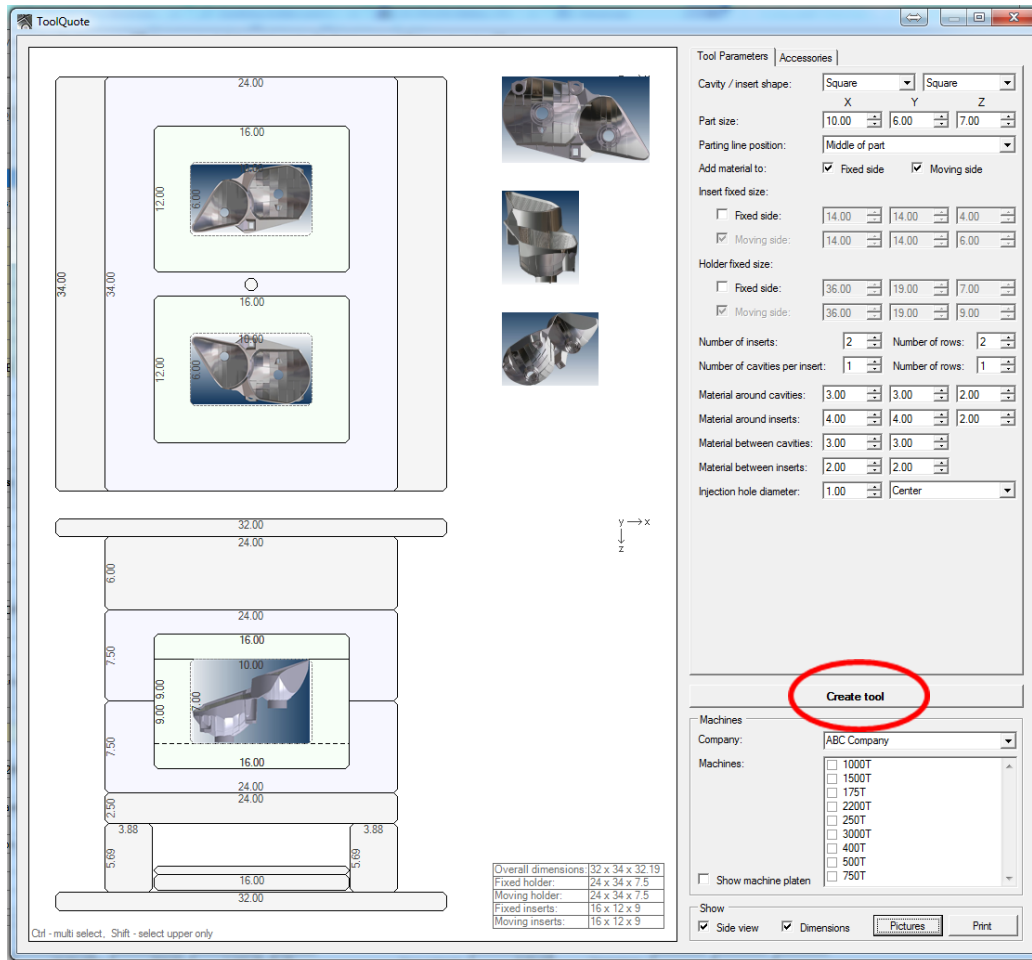
Step 4 - Here you can start entering the tool parameters such as part size, # of cavities, inserts, plate sizes, etc. Initial sizes are pre-populated according to your profile defaults, but all sizing is changed instantly on the graphic layout as you make changes.

You can also set parting line block sizes to top, bottom or middle of part.



Step 5 - As you make inputs, the basic mold layout is generated & automatically updated.

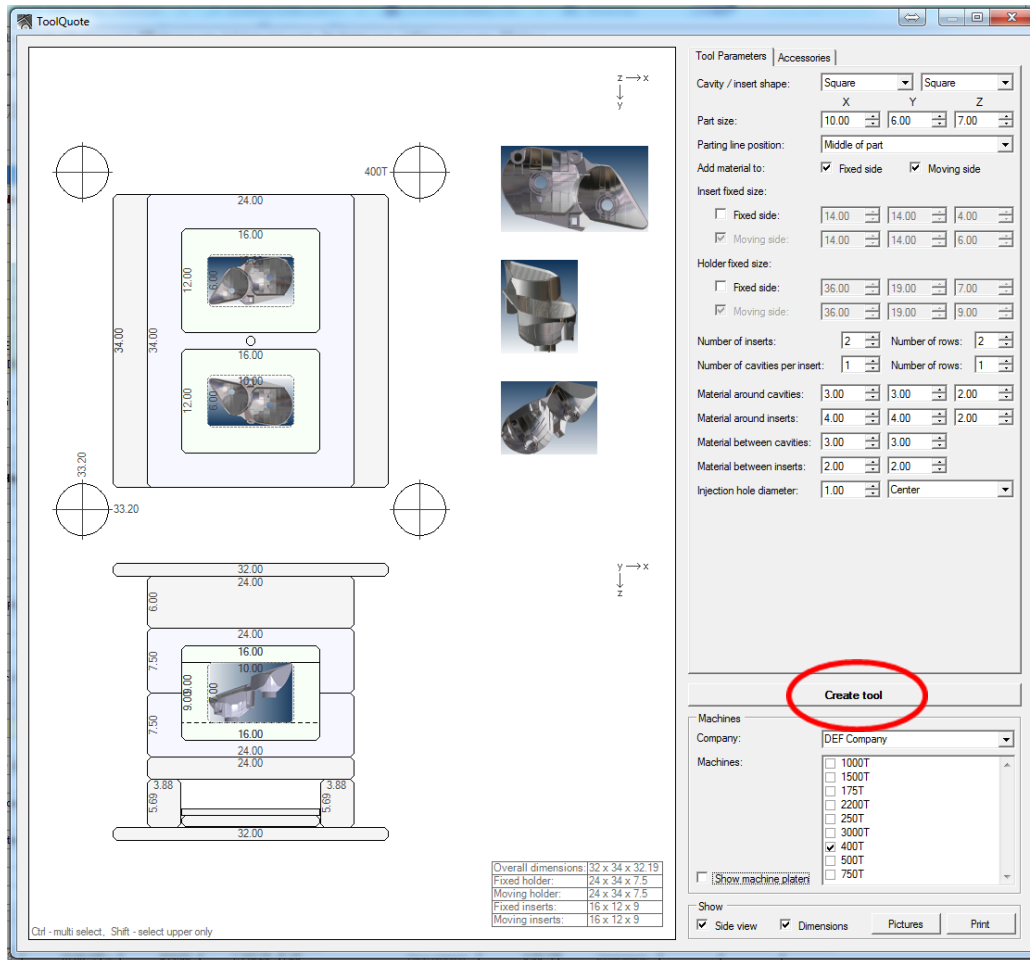
Change as necessary, part size, plate sizes, # of cavities, inserts ejection height, clamp plate overhang, part rotation, gate position, plus lots more!



Step 6 – Import photos of part as desired. Photos will be fit to cavity sizes already determined. And can be rotated and mirrored for handed parts. Up to 4 additional pics can be added along the side pane.

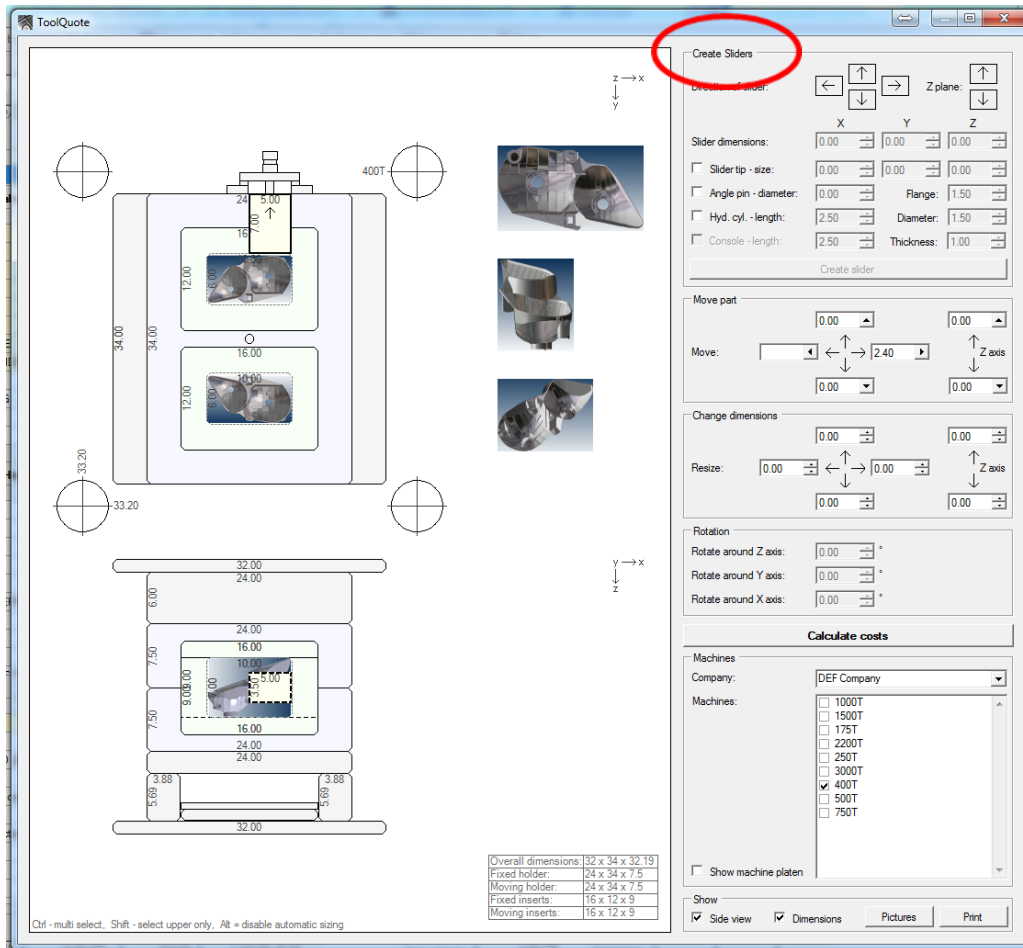
Photos will also appear on your quote calculations.

Select 'Create Tool'



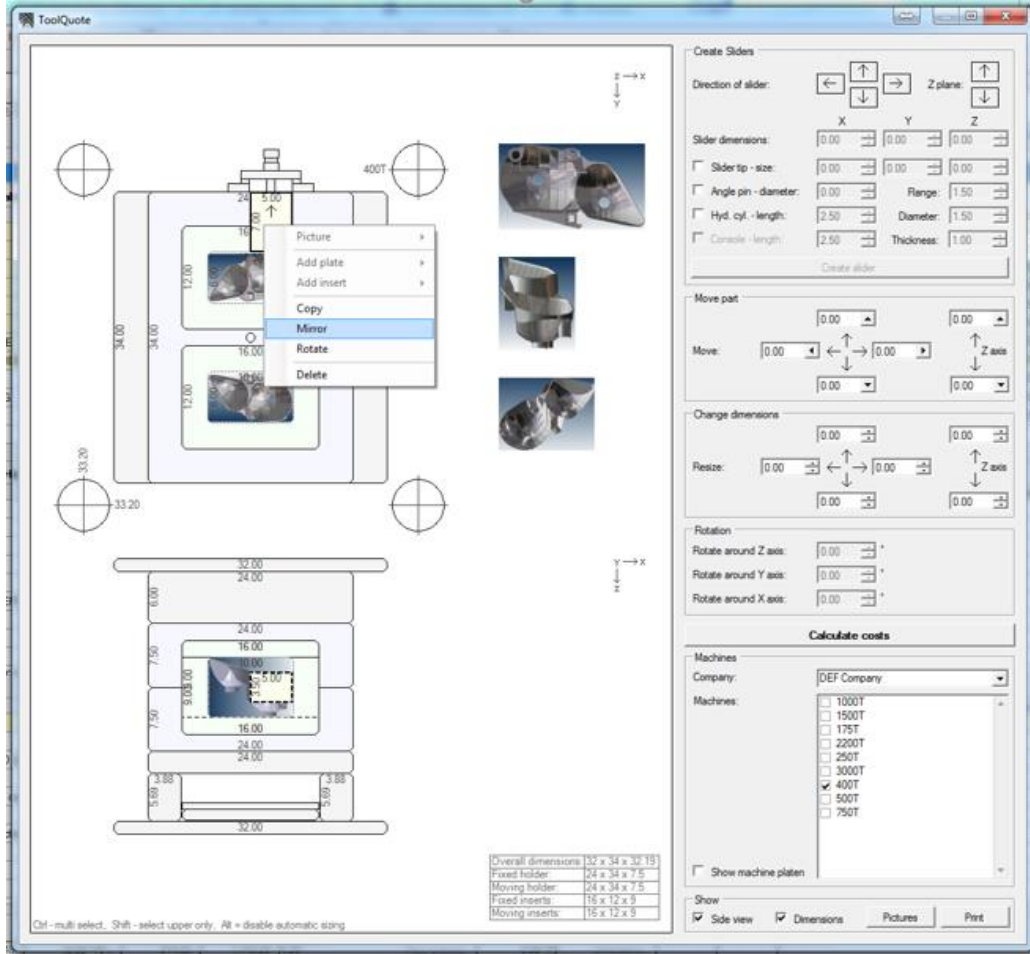
Before Create Tool – You also have the option to check if the mold will fit in a specified press. It will show the mold & tie bar positioning. This can be saved with the mold layout. You can setup various machines to choose from for your different customers.

Select 'Create Tool'

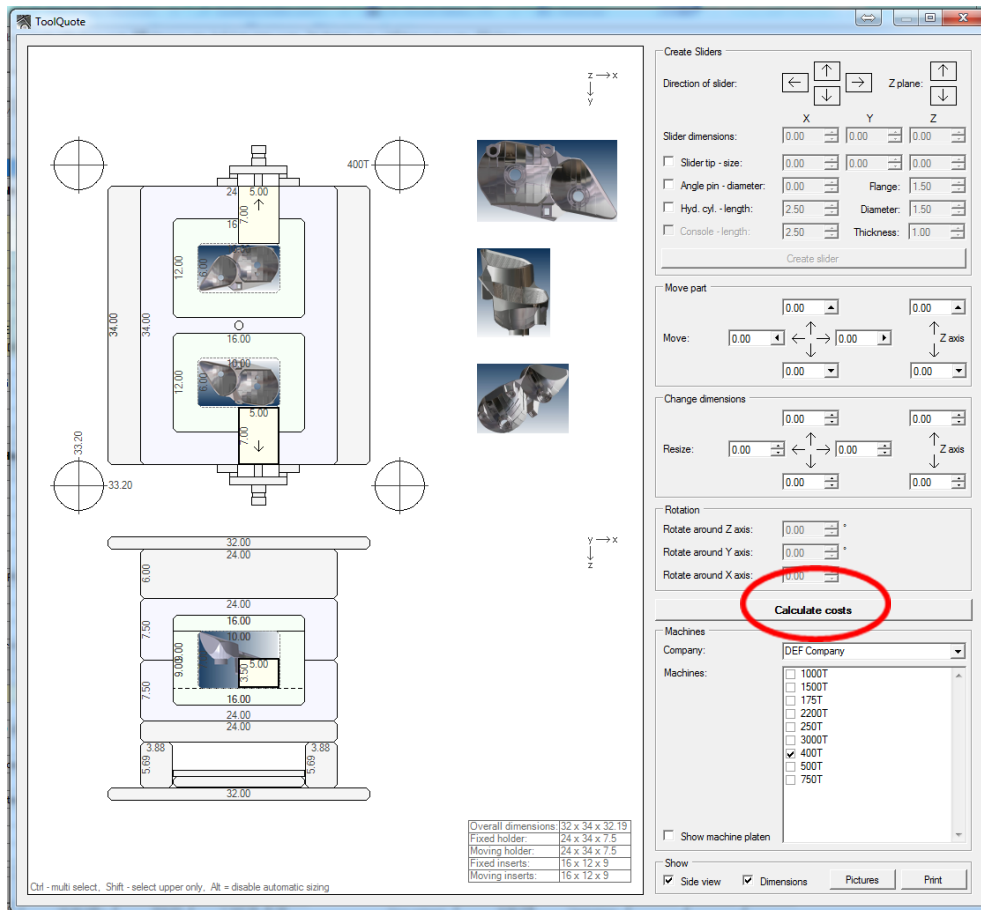


Step 7 – Add Slides. Slides can have a slider tip, be angle pinned or hydraulic.

Parts, slides, plates, inserts, etc can all be moved, have dimensions changed and rotated as necessary.



Step 8 - Slides can be added to, copied, mirrored, rotated and positioned where needed. All slides will be added to bill of materials list.



Step 9 – Tool layout is shown with slides completed, optional ISO photo of part and optional press layout pattern to ensure tool fits on customer machine.

Click on 'Calculate Costs'

ToolQuote

Print calculation Send by e-mail Copy part Change rate Calculate costs Delete part External quote Close Status: Received

Quote #: DEMO2017/031 RFQ #: DEF Company Description: Sample Trial for Demo Purposes Received: 10/ 2/2017 Send by: 10/ 9/2017

Calculation finished: 10/ 2/2017 Quote sent: 10/ 2/2017 Ordered: 10/ 2/2017 Archive: 10/ 9/2017

Tools:

Tool positions / Materials:

Part	#	Pos	Material	X	Y	Z	Weight/pc	Weight (lb)	Price/lb	Mat. costs	Hours/pc	Hours	Hourly rate	Price
HOLDER FIXED SIDE	1	1	ExEl P20M (\$1.75)	24.00	34.00	7.50	1.738.1	1.738.1	1.75	3,041.68	15	15	70.00	1,050.00
HOLDER MOVING SIDE	1	1	ExEl P20M (\$1.75)	24.00	34.00	7.50	1.738.1	1.738.1	1.75	3,041.68	15	15	70.00	1,050.00
CLAMPING PLATE FIXED SIDE	1	1	4140 Holder Block (\$1.50)	32.00	34.00	1.50	463.4	463.4	1.50	695.10	10	10	70.00	700.00
CLAMPING PLATE MOVING SIDE	1	1	4140 Holder Block (\$1.50)	32.00	34.00	1.50	463.4	463.4	1.50	695.10	10	10	70.00	700.00
EJECTOR BACK PLATE	1	1	4140 Holder Block (\$1.50)	16.00	34.00	1.25	193.1	193.1	1.50	289.65	6	6	70.00	420.00
EJECTOR PLATE	1	1	4140 Holder Block (\$1.50)	16.00	34.00	0.75	115.9	115.9	1.50	173.85	6	6	70.00	420.00
SUPPORT	1	1	MILD STEEL	3.88	34.00	5.69	212.9	212.9	1.20	255.48	8	8	70.00	560.00
SUPPORT	2	1	MILD STEEL	3.88	34.00	5.69	212.9	212.9	1.20	255.48	8	8	70.00	560.00
THIRD PLATE FIXED SIDE	1	1	4140 Holder Block (\$1.50)	24.00	34.00	6.00	1,390.0	1,390.0	1.50	2,085.00	12	12	70.00	840.00
THIRD PLATE MOVING SIDE	2	1	4140 Holder Block (\$1.50)	24.00	34.00	2.50	579.2	579.2	1.50	868.80	12	12	70.00	840.00
BECU inserts	4	4	Copper Thermal Mold 172HH (\$16.00)	4.00	4.00	4.00	20.5	82.0	16.00	1,312.00	16	64	70.00	4,480.00
LIFTERS - DOGHOUSE SM	2	2	ExEl P20M-High Hard (\$1.85)	1.50	15.00	1.50	1.0	2.0	1.85	3.70	18	36	60.00	2,160.00
ELECTRODES	6	6	POCC 2	12.00	12.00	0.25	2.4	14.4	9.38	135.00	15	90	70.00	6,300.00
INSERT FIXED SIDE	2	2	H13 Commercial	16.00	12.00	9.00	489.1	978.2	3.40	3,328.88	10	20	70.00	1,400.00
INSERT MOVING SIDE	2	2	H13 Commercial	16.00	12.00	9.00	489.1	978.2	3.40	3,328.88	10	20	70.00	1,400.00
SLIDER	2	2	ExEl P20M-Lens Quality (\$2.25)	5.00	7.00	3.50	34.8	69.6	2.25	156.60	12	24	70.00	1,680.00
CONSOLE	2	2	ExEl P20M (\$1.75)	10.00	2.50	2.10	0.0	0.0	1.75	0.00	8	16	70.00	1,120.00
							9,231.4	19,660.94			372			25,680.00

Labour Hrs / Machine Hrs:

Labour / Machine	Comments	Hours	Hourly rate	Price
CAD DESIGN		200	75.00	15,000.00
CAM PROGRAMMING		250	75.00	18,750.00
CNC #1	HS Milling - Reflector - Lens quality	120	75.00	9,000.00
CNC #2	Conventional CNC	30	70.00	4,200.00
BORING MILL		35	70.00	2,450.00
CMM MEASUREMENT REPORT		30	70.00	2,100.00
CNC MACHINING		360	70.00	25,200.00
DRILLING		30	70.00	2,100.00
EDM		120	70.00	8,400.00
FITTING / SPOTTING / ASSEMBLY		100	70.00	7,000.00
GUNDRILLING		25	70.00	1,750.00
HANDWORK & POLISHING		80	70.00	5,600.00
MOLDMAKING	Not including fitting, spotting, assembly	250	70.00	17,500.00
		1,660		119,050.00

Purchased items:

Description	Supplier	Comments	Pcs./units	Price/unit	Price
HEAT TREATING			1,418.2	1.75	2,481.85
HOT RUNNER MANIFOLD (20K)			1	20,000.00	20,000.00
Identification Plaques			1	150.00	150.00
Laser Engraving (at \$250 / cavity)			2	250.00	500.00
Pressure Transducers		RUG	2	900.00	1,800.00
Standard Components (ejection, guides, screws, etc)		DMS	1	3,000.00	3,000.00
STRESS RELIEF			1,418.2	0.10	141.82
SUB CONTRACT			0	0.00	0.00
Transport - \$750			1	750.00	750.00
HYDRAULIC CYLINDER	PARKER		2	750.00	1,500.00

Summary

Price:	Profit:	USD:	Other Currency:	Exch. rate:
Material: 19,688.24	10.00%	21,657.06	27,071.32	1.25
Labour: 139,480.00	0.00%	139,480.00	174,350.00	
Purchased: 30,323.67	10.00%	33,356.04	41,695.05	
Total: 189,491.91	5,001.19	194,493.10	243,116.38	

Price ordered: 0.00 Dimensions: X 32.00 Y 34.00 Z 32.15 Sliders: 2 Hrs: 1962 Weeks: % for stress relief / heat 70.00% Material for stress relief / 1,418.2

Comments for inclusion in quote - special notes

Comments for inclusion and visible on main screen.

Grand total: USD 220,749.68 Other Currency 275,937.10

Step 10 - All tool positions and sizes are automatically generated based on tool layout generated.

MFG hours can be added or adjusted manually or can be input automatically from the tool profile.

Purchased items can also be added manually as needed or built in to the profiles for automatic inclusion.

Totals are shown including margins and overall mold sizing. Additional currency can also be shown if desired.

TOOL QUOTE

INTERACTIVE QUOTING FOR TOOLMAKERS

JDL Tech.ca
JDL Technical Services

ToolQuote - Calculation DEMO2017/031

Zoom + Fit page Fit width Print Save PDF Page settings Close

Quote #: DEMO2017/031

Client: DEF Company RFQ #: Sample Trial for Demo Purposes

Description: Trial for Demo purposes - 2 cav Drawing: 100217

Cavities: 2 Sliders: 2 Holder: EXEII P20M (\$1.75) Insert: H13 Commercial

TOOL POSITIONS	PCS	MATERIAL	DIMENSIONS	LB	P/LB	MAT	HOURS	RATE	LABOUR
HOLDER FIXED SIDE	1	EXEII P20M (...)	24.00 x 34.00 x 7.50	1,738.1	1.75	3,041.68	15	70.00	1,050.00
HOLDER MOVING SI...	1	EXEII P20M (...)	24.00 x 34.00 x 7.50	1,738.1	1.75	3,041.68	15	70.00	1,050.00
INSERT FIXED SIDE	2	H13 Commercial	16.00 x 12.00 x 9.00	978.2	3.40	3,325.88	20	70.00	1,400.00
INSERT MOVING SIDE	2	H13 Commercial	16.00 x 12.00 x 9.00	978.2	3.40	3,325.88	20	70.00	1,400.00
SLIDER	2	EXEII P20M-L...	5.00 x 7.00 x 3.50	69.6	2.25	156.60	24	70.00	1,680.00
LIFTERS - DOGHOU...	2	EXEII P20M-Hi...	1.50 x 1.50 x 1.50	2.0	1.85	3.70	36	80.00	2,880.00
CONSOLE	2	EXEII P20M (...)	10.00 x 2.50 x 2.10	0.0	1.75	0.00	16	70.00	1,120.00
EJECTOR BACK PLA...	1	4140 Holder Bl...	16.00 x 34.00 x 1.25	193.1	1.50	289.65	6	70.00	420.00
EJECTOR PLATE	1	4140 Holder Bl...	16.00 x 34.00 x 0.75	115.9	1.50	173.85	6	70.00	420.00
CLAMPING PLATE FI...	1	4140 Holder Bl...	32.00 x 34.00 x 1.50	483.4	1.50	695.10	10	70.00	700.00
CLAMPING PLATE M...	1	4140 Holder Bl...	32.00 x 34.00 x 1.50	483.4	1.50	695.10	10	70.00	700.00
THIRD PLATE FIXED...	1	4140 Holder Bl...	24.00 x 34.00 x 5.00	1,390.0	1.50	2,065.00	12	70.00	840.00
THIRD PLATE MOVIN...	1	4140 Holder Bl...	24.00 x 34.00 x 2.50	679.2	1.50	868.80	12	70.00	840.00
SUPPORT 1	1	MILD STEEL	3.88 x 34.00 x 5.69	212.9	1.20	256.48	8	70.00	560.00
SUPPORT 2	1	MILD STEEL	3.88 x 34.00 x 5.69	212.9	1.20	256.48	8	70.00	560.00
BECU inserts	4	Copper Therm...	4.00 x 4.00 x 4.00	82.0	16.00	1,312.00	64	70.00	4,480.00
ELECTRODES	6	POCO 2	12.00 x 12.00 x 0.25	14.4	9.38	135.06	90	70.00	6,300.00
				9,172.5		19,688.24	372		25,680.00

LABOUR HRS / MACHINE HRS	COMMENTS	HOURS	RATE	PRICE
CAD DESIGN		250	75.00	18,750.00
CAM PROGRAMMING		250	75.00	18,750.00
CNC #1	HS Milling - Reflector - Lens quality	120	75.00	9,000.00
CNC #2	Conventional CNC	60	70.00	4,200.00
BORING MILL		35	70.00	2,450.00
CMM MEASUREMENT REPORT		30	70.00	2,100.00
CNC MACHINING		360	70.00	25,200.00
DRILLING		30	70.00	2,100.00
EDM		120	70.00	8,400.00
FITTING / SPOTTING / ASSEMBLY		100	70.00	7,000.00
GUNDRILLING		25	70.00	1,750.00
HANDWORK & POLISHING		80	70.00	5,600.00
MOLDMAKING	Not including fitting, spotting, assembly	250	70.00	17,500.00
		1,680		119,050.00

PURCHASED ITEMS	SUPPLIER	COMMENTS	PCS	PIPC	PRICE
HYDRAULIC CYLINDER	PARKER		2	750.00	1,500.00
HEAT TREATING			1,418.2	1.75	2,481.85
HOT RUNNER MAINFOLD (20K)			1	20,000.00	20,000.00
Identification Plaques			1	150.00	150.00
Laser Engraving (at \$250 / cavity)			2	250.00	500.00
Pressure Transducers	RJG		2	900.00	1,800.00
Standard Components (ejection, guides, screws, ...)	DMS		1	3,000.00	3,000.00
STRESS RELIEF			1,418.2	0.10	141.82
SUB CONTRACT			0	0.00	0.00
Transport - \$750			1	750.00	750.00
					30,323.67

SUMMARY		Exch. rate: 1.25		DIMENSIONS 32.00 x 34.00 x 32.19	
	PRICE	PROFIT	USD	OTHER CURR...	
MATERIAL	19,688.24	10.00%	21,657.06	27,071.32	CAVITIES 2
LABOUR	144,730.00	0.00%	144,730.00	180,912.50	SLIDERS 2
PURCHASED	30,323.67	10.00%	33,356.04	41,895.06	HRS 2,032
TOTAL	194,741.91	5,001.19	199,743.10	249,678.88	WEEKS 0
					HEAT TREATING 1,418.2 (70.00%)

(continuation)

FINANCING	WEEKS	RATE	USD	OTHER CURR...
	0	2.75%	0.00	0.00

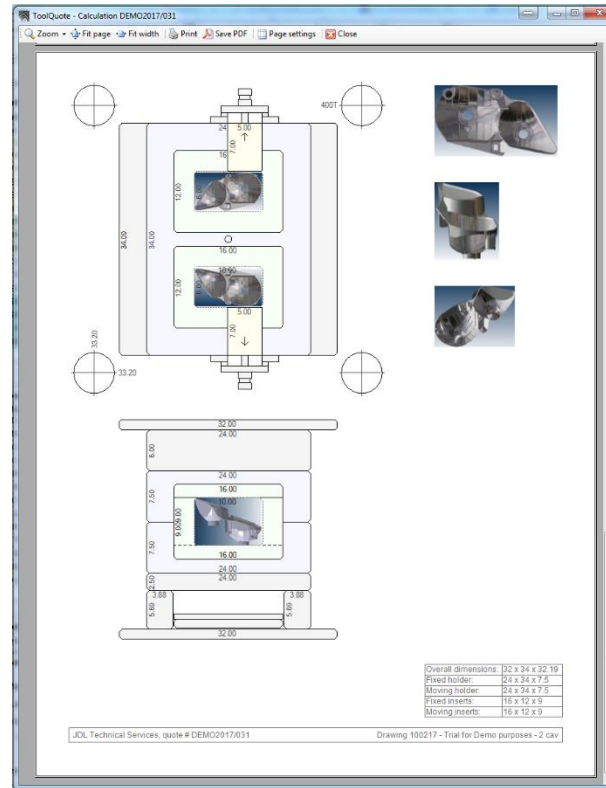
USED DEFINE...	PROFIT	USD	OTHER CURR...
	5.00%	9,987.16	12,483.95
	2.50%	4,993.58	6,241.98
SPARE PARTS	6.00%	11,984.59	14,980.74
TOTAL	13.50%	26,965.33	33,706.66

GRAND TOTAL	USD	OTHER CURR...
	226,708.43	283,385.54

COMMENTS

Comments for inclusion in quote - special notes

Overview of all costs readily available as well as tool layout on print calculation.



TOOLQUOTE
 INTERACTIVE QUOTING FOR TOOLMAKERS

JDL Tech.ca
 JDL Technical Services

**Additional tools can be added to the quote.
Quote history is recorded after every, revision, email, printing, etc.**

Quote conditions:
 Terms - 50% down payment, 40% on first shots, final 10% after approvals
 Prices are valid for 60 days.
 Thank you for the opportunity to quote this project.

Add quote conditions by selecting from a pre-determined list or add & adjust as necessary.

ToolQuote - Quote DEMO2017/031

Zoom Fit page Fit width Print Save PDF Page settings Close

JDLTech.ca
JDL Technical Services

519-919-7391
ToolQuote@JDLTech.ca
www.JDLTech.ca

QUOTE # : DEMO2017/031
RFQ # :
DATE : 2017-10-02
CLIENT : DEF Company

#	DRAWING	DESCRIPTION	DIMENSIONS	CAV	SLD	WEEKS	PRICE USD
1	100217	Trial for Demo purposes - 2 cav	32.00 x 34.00 x 32.19	2	2	14	226,708.43
2	100217	Trial for Demo purposes - 2 cav - CAPACITY TOOLING CAD/CAM Hours removed	32.00 x 34.00 x 32.19	2	2	12	188,402.18

QUOTE CONDITIONS
Terms - 50% down payment, 40% on first shots, final 10% after approvals.
Prices are valid for 60 days.
Thank you for the opportunity to quote this project.

Quote # DEMO2017/031, rfq # Page 1

ToolQuote - Quote DEMO2017/031

Zoom Fit page Fit width Print Save PDF Page settings Close

Technical drawing showing dimensions for a tool holder. Key dimensions include: 34.00, 34.00, 33.20, 33.20, 40.00, 12.00, 16.00, 16.00, 16.00, 24.00, 24.00, 24.00, 24.00, 7.50, 7.50, 10.00, 10.00, 5.00, 7.00, 5.00, 7.00, 5.00, 3.88, 3.88, 32.00. The drawing includes 3D model thumbnails of the tool holder and inserts.

Overall dimensions:	32 x 34 x 32.19
Fixed holder:	24 x 24 x 7.5
Moving holder:	24 x 34 x 7.5
Fixed inserts:	16 x 12 x 9
Moving inserts:	16 x 12 x 9

JDL Technical Services, quote # DEMO2017/031 Drawing 100217 - Trial for Demo purposes - 2 cav

An external quote can be previewed along with tool layout before printing or emailing as a PDF file. If changes need to be made, you can easily go back to calculation and make edits. Export to your own or customer Excel quote sheet is also possible.

Compare tools

Print selection E-mail selection Copy quote **Find by pictures** Export data Import data Close

Quote/project: [] Date from: 26/02/2016 Dimension X: [] +/- 10 % Cavities: [] Material lb: [] +/- 10 %
 Client: [] Date to: 26/05/2016 Dimension Y: [] +/- 10 % Sliders: [] Hrs.: [] +/- 10 %
 Realized only [x] Include archive [] Drawing #: [] Dimension Z: [] +/- 10 % Complexity: [] Part type: []

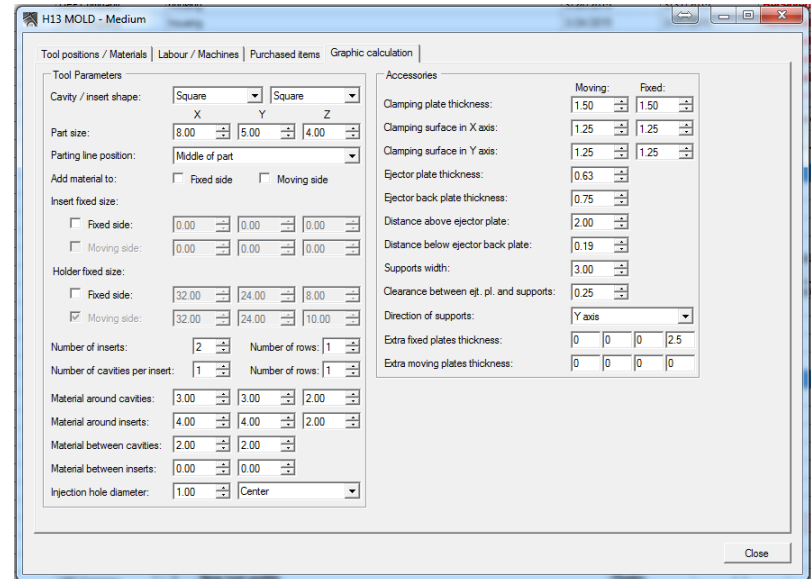
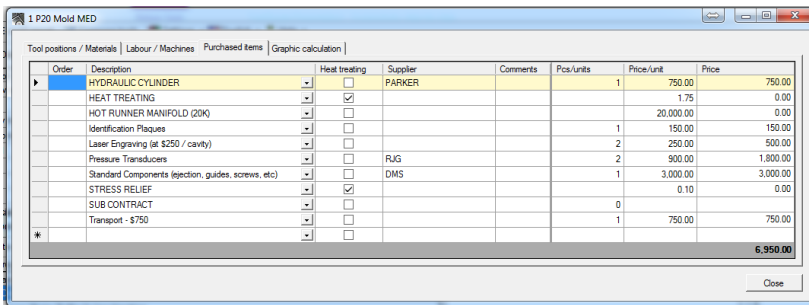
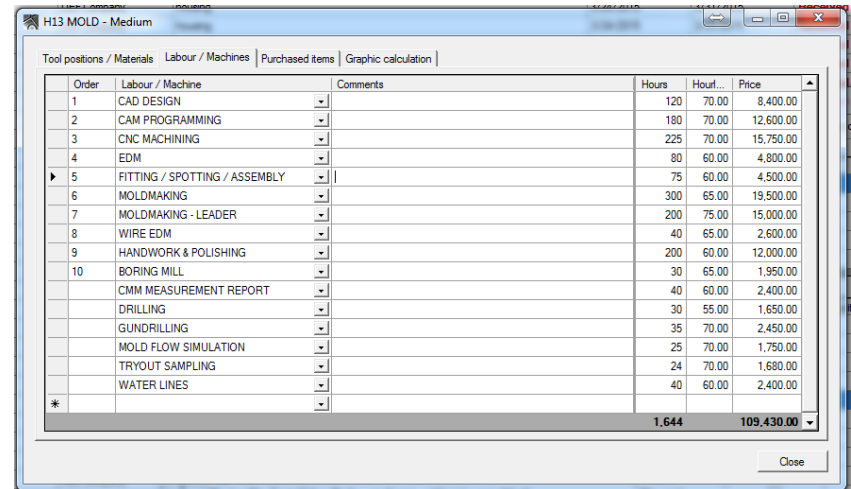
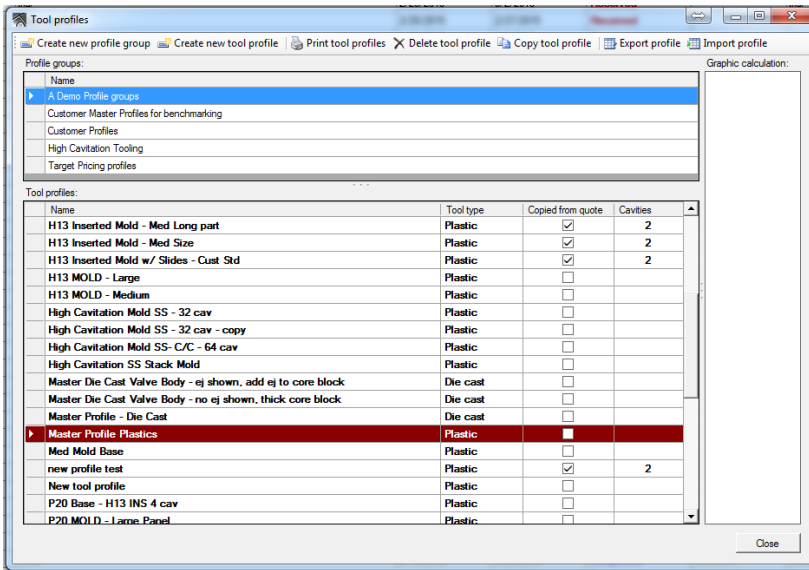
Quote #	Client	Part	Part type	Dimensions	Cavit...	Slid...	Mat. lb	Complex...	Quote s...	Hrs.	Total cost	Projec...	Hrs.	Labour	Material	Purchased	Costs	Sale	Profit	Profi...
2015/041	ABC Company	4 cav cap & lid	Class 101	20.50 x 27.50 x 20.06	4		2,966.1	2	07/03/20...	964	94,498.95	1290	928	62,250.00	6,050.00	24,800.00	93,100.00	97,950.00	4,850.00	5 %
2015/041	ABC Company	12 cav cup	Class 102	55.00 x 27.00 x 24.41	12		8,858.3	2	07/03/20...	1,440	156,320.71	1289	1,475	102,600.00	15,975.00	38,900.00	157,475.00	163,000.00	5,525.00	3 %
2015/041	ABC Company	12 cav cup - Capacity Tooling	Class 102	55.00 x 27.00 x 24.41	12		8,858.3	2	07/03/20...	1,265	144,070.71	1288	1,225	84,950.00					675.00	8 %
2015/040	ABC Company	16 cav	Class 102	34.48 x 20.98 x 21.31	16	8	3,641.6	2		2,345	241,153.12	1287	2,395	165,600.00					600.00	-7 %
2015/035	ABC Company	sample 2 cav	12-24" part	34.50 x 22.50 x 23.56	2		4,724.5	2	29/07/20...	742	81,623.25	1285	715	46,500.00					300.00	9 %
2015/033	ABC Company	RA demo	12-24" part	53.00 x 16.00 x 22.69	2	6	4,137.2	3	15/06/20...	1,763	127,639.82	1284	1,648	109,400.00					750.00	4 %
2014/009	ABC Company	small	Class 102	18.50 x 16.50 x 15.56	4	4	978.5	1	12/09/20...	500	37,552.97	1282	526	44,500.00					900.00	-11 %
2014/009	ABC Company	6x6x4 p20	6-12" part	22.20 x 19.40 x 19.06	1	1	2,441.3	4	12/09/20...	742	65,553.71	1280	775	63,500.00					200.00	-7 %
2015/021	ABC Company	2 cav bezel 1+1	Decorative	40.00 x 22.90 x 31.56	2	6	7,855.0	3	31/03/20...	1,663	154,660.51	1280	1,300	85,000.00					000.00	4 %
2014/009	ABC Company	6x6x4 H13	6-12" part	32.50 x 21.50 x 23.06	2		4,009.8	4	12/09/20...	1,306	119,368.57	1279	1,360	108,000.00					600.00	-3 %
2014/038	DEF Company	sample part	Class 101	20.50 x 18.00 x 16.31	4		1,543.1	3	24/11/20...	535	41,967.90	1276	575	38,400.00					700.00	4 %
2014/014	ABC Company	higher complex	12-24" part	44.50 x 23.50 x 35.81	2	6	9,016.0	4	19/08/20...	1,437	119,659.58	1272	1,410	110,000.00					091.00	2 %
2014/003	ABC Company	small part	6-12" part	24.50 x 22.00 x 16.50	4	8	2,435.0	3	12/09/20...	707	65,803.64	1266	740	47,000.00					500.00	-4 %
2014/011	ABC Company	2 cav P20 high compl 9" part	6-12" part	36.00 x 20.00 x 25.81	2		4,134.6		17/10/20...	1,396	104,124.42	1265	840	62,250.00					625.00	3 %
2014/038	DEF Company	Capacity tooling part	Class 101	20.50 x 18.00 x 16.31	4		1,543.1	3	24/11/20...	485	38,467.90	1258	480	31,050.00					550.00	2 %

Find by pictures

Database allows for quick filtering of previous quotes.

Using the Compare Tools function you can find and compare existing quotes from the database as well as add actual costs of manufactured tools to the corresponding quote for comparison.

'Find by Pictures' makes for very quick searches!



Completely Customizable Profile
Screens to organize settings
to the way you are used to working.

TOOL QUOTE
INTERACTIVE QUOTING FOR TOOLMAKERS

JDL Tech.ca
JDL Technical Services

Default values

Settings | Summary section

Default values

Hourly rate: 70.00

Exchange rate: 1.25

Quote numbers

Starting number: 032

Include Year

Text before number: DEMO

Text after number:

Profit calculation

Markup (surcharge to the price)

Gross Profit Margin (revenue)

Decimal numbers

Length: 2 e.g. 123.12

Weight: 1 e.g. 123.1

Density: 3 e.g. 123.123

Price: 2 e.g. 123.12

Percent: 2 e.g. 12.34 %

General

Select language before printing

Use profile groups

Use detailed labour calculation

OK Cancel

Default values

Settings | Summary section

Price: USD Other Currency

Material: Profit: 10.00 %

Labour: 0.00 %

Purchased: 10.00 %

Total:

Weeks: Rate: USD: Other Currency:

Financing: 2.75 %

Profit: USD: Other Currency:

Used Defined Field 5.00 %

Used Defined Field 2.50 %

User Defined Field 1.50 %

Sale Commissions 2.50 %

Fixed costs 0.00 %

Spare parts 6.00 %

Total %

USD: Other Currency:

Grand total: USD: Other Currency:

OK Cancel

Materials

Name	Density (lb/cu ...	Price/lb	Last change
1020 Plate	0.283	1.30	3/31/2017
H-13	0.283	5.20	2/1/2017
4140	0.283	1.67	9/30/2016
420 Stainless	0.283	4.95	9/30/2016
5083 Aluminum	0.101	2.65	9/30/2016
Ampco 18	0.300	8.75	9/30/2016
Ampco 940	0.300	15.00	9/30/2016
HH Moldmax	0.322	22.00	9/30/2016
HH P-20	0.283	1.92	9/30/2016
LG P-20	0.283	2.86	9/30/2016
M1 Aluminum	0.101	2.96	9/30/2016
Max 15/5	0.283	8.25	9/30/2016
Mold Max	0.322	22.00	9/30/2016
P-20	0.283	1.86	9/30/2016
QC10/Alumold 500	0.101	6.59	9/30/2016
S7	0.283	5.37	9/30/2016
1020 (\$1.20)	0.283	1.35	8/22/2016
P20	0.283	2.10	8/3/2016
420 SS EDRO	0.284	4.75	8/3/2016
IND - OS	7.861.000	550.00	6/25/2016

Export Import Close

Completely Customizable Default Settings
 For quote numbering, margins, user defined extras,
 Materials and costs, currencies, and more

Key Features of ToolQuote

Simple to Setup & Use

Instant Mold Layout Creation

Automate & Organize Your Quotes

Automatic Calculation of Steel Sizes and Costs

Print & Email Quotes Directly from ToolQuote

Add Actual Costs for Future Comparison

Filter and Compare Past Quotes

Add Photos to Tool Layout

User Definable Database

Questions? Want more info?

Send an e-mail to:
ToolQuote@JDLTech.ca

Visit our website
www.JDLTech.ca

JDL Technical Services
Windsor, Ontario

519-919-7391

TOOL QUOTE
INTERACTIVE QUOTING FOR TOOLMAKERS

JDLTech.ca
JDL Technical Services

Also Available!



Digital Time Clock

Track Employee Hours, by Job & Operation for Payroll, Job Scheduling, Estimating and Progress Reports

TOOL QUOTE
INTERACTIVE QUOTING FOR TOOLMAKERS

JDLTech.ca
JDL Technical Services

TOOL MASTER

INTELLIGENT AUTOMATED CNC MACHINING

ToolMaster - Windows based program that automates CNC machining by intelligently monitoring and managing the condition of cutting tools during CNC machining.

Run Your CNC Machine
WITHOUT
Operator Intervention

TOOL QUOTE
INTERACTIVE QUOTING FOR TOOLMAKERS

JDLTech.ca
JDL Technical Services

FREE

***Machine Burden Rate
Calculator***

Just for asking!

***KNOW What Your Machines are
Costing You!***

Recent Articles

Moldmakers, Those 'FREE ESTIMATES'
You Provide
How Much Are They Costing You?



ONLY 2 HOURS

Send Out Quotes using ToolQuote with
Only 2 Hours Training! REALLY??

TOOL QUOTE
INTERACTIVE QUOTING FOR TOOLMAKERS

JDLTech.ca
JDL Technical Services